



# PRE-FABRICATED VENTILATED BRICK FAÇADE SYSTEM

Innovative pre-pointed brick slip cladding solution



# BRICK REIMAGINED. ARCHITECTURE REDEFINED.

## A system for the highest standards

STOFIX is a unique façade system that combines the natural beauty of genuine brick with the benefits of a rear-ventilated façade. It creates durable, energy-efficient and architecturally sophisticated building envelopes – while offering new possibilities in design and cost efficiency.



PROJECT: THE BATH HOUSE, BIRMINGHAM, UK

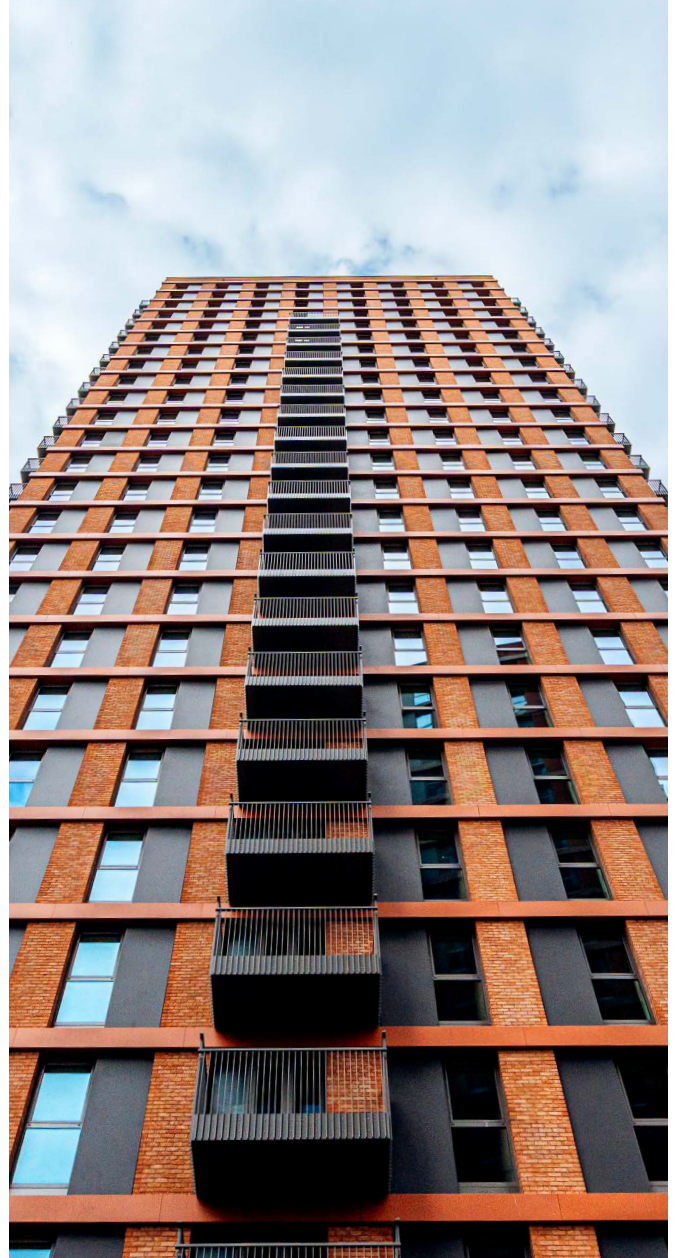
## Well established

STOFIX is firmly established in the UK and Scandinavia and continues to expand into additional European markets.

With more than 1,000 completed projects, the system's reliability and quality are proven in practice. Our system has 100% quality assurance with zero brick slip failures recorded to date.

## Innovative prefabrication

Unlike traditional brickwork, STOFIX relies on precise prefabrication: genuine brick slips are factory-fixed to a steel backing plate under strictly controlled production conditions and pointed in the factory. This enables a construction process without weather-related delays, ensures sustainable and optimised material consumption whilst significantly reducing installation times. The panels have a maximum size of 600 × 1200 mm which means the weight is suitable for a 1-2 person lift. On site, the panels are mounted quickly and efficiently onto the substructure supplied by STOFIX. To complete the façade, final joints are to be pointed on site; subject to the panel design, approximately 5 % of pointing remains.



“

*“For thousands of years, brick has been one of the most natural and durable building materials. Today, as sustainable and long-lasting solutions matter more than ever, we continue this tradition. For over 30 years, Stofix has combined the strengths of brick with modern technology – creating the ideal façade solution for the future.”*

”

Andy McKechnie  
Technical Director, Stofix Group

# EXPERIENCE, QUALITY AND EFFICIENCY.

## Tradition with a future

Founded in 1993 in Finland, STOFIX has evolved into an internationally recognised provider of innovative façade systems. Our modern production facility ensures efficient, on-schedule delivery with the highest quality standards.



PROJECT: THE HOLLOWAY, BIRMINGHAM, UK.

## Continuous product development

Over three decades, STOFIX has taken significant strides to increase productivity, whilst optimising operational and energy efficiency. Continuous product development is at the core of STOFIX, from ensuring expertise across various brick types and sizes to the evolution of efficient material tracking, delivery, and installation methods.

## Quality that sets standards

STOFIX brick slip façade elements are manufactured on an automated production line under carefully controlled conditions to ensure consistent high quality. STOFIX partner with carefully selected, reputable manufacturers.

To guarantee durability, STOFIX only uses slips engineered to EN 14411 standard or EN 771-1 cut bricks. Stringent quality controls are measured throughout the entire process to ensure system quality is achieved.

## Tested and certified

The STOFIX system has been extensively tested and third-party approved. It unites design, safety and sustainability meeting the highest architectural standards whilst proven to withstand the test of time.





# CREATIVE FREEDOM FOR ARCHITECTS.

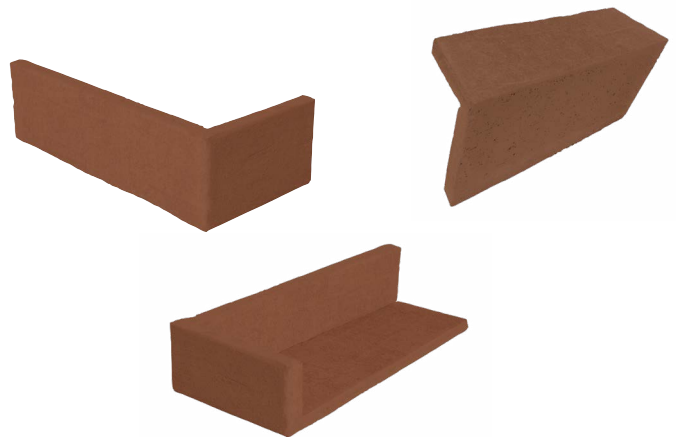
## Bespoke design

STOFIX is suitable for multiple applications on site, providing a variety of projects with extensive formats, colours, finishes and textures. Complex bond patterns and feature brickwork can be incorporated into the project design and deliver long-lasting performance.



## SPECIAL SHAPES

STOFIX offers multiple special shapes to give your façades the perfect finishing touch.



[READ MORE ON OUR WEBSITE](#)

## Meeting architectural vision

STOFIX offers a wide range of designs to ensure the façade is aesthetically pleasing to meet architectural vision.

### EXAMPLES OF BRICK COLOURS



### MORTAR COLOURS



R340 – KS 9/314  
black



R180 – KS 8/566  
reddish brown



R252 – KS 7/635  
brown grey



R160 – KS 8/568  
dark brown



R250 – KS 7/564  
light grey



R251 – KS 1/545  
light beige



R340 – KS 7/563  
dark grey



R610 – KS 1/517  
beige



R113 – KS 7/562  
grey



R222 – KS 9/315  
white



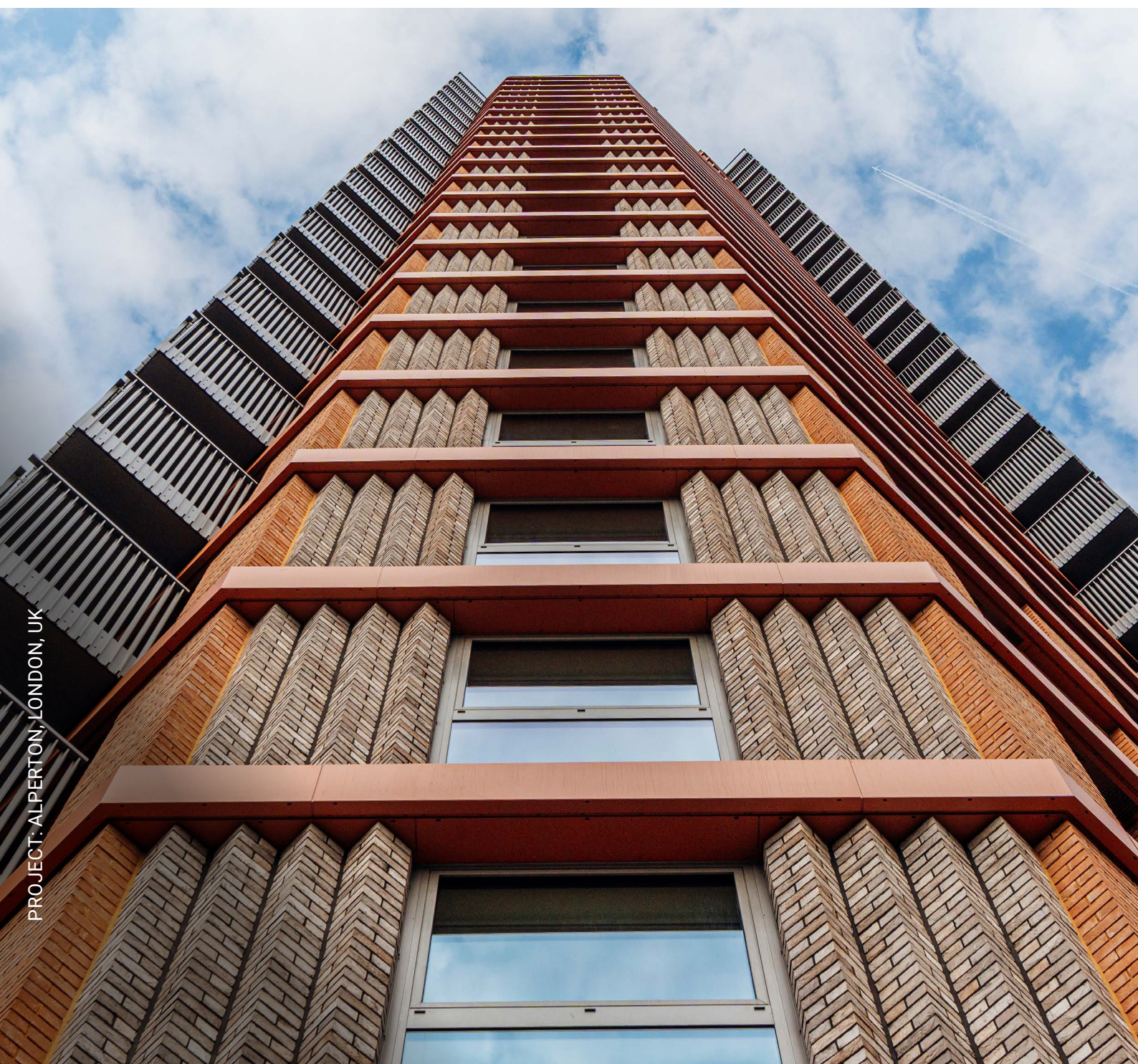
R510 – KS 8/567  
brown

# DESIGNED FOR ARCHITECTURAL FREEDOM.

## One system, multiple applications

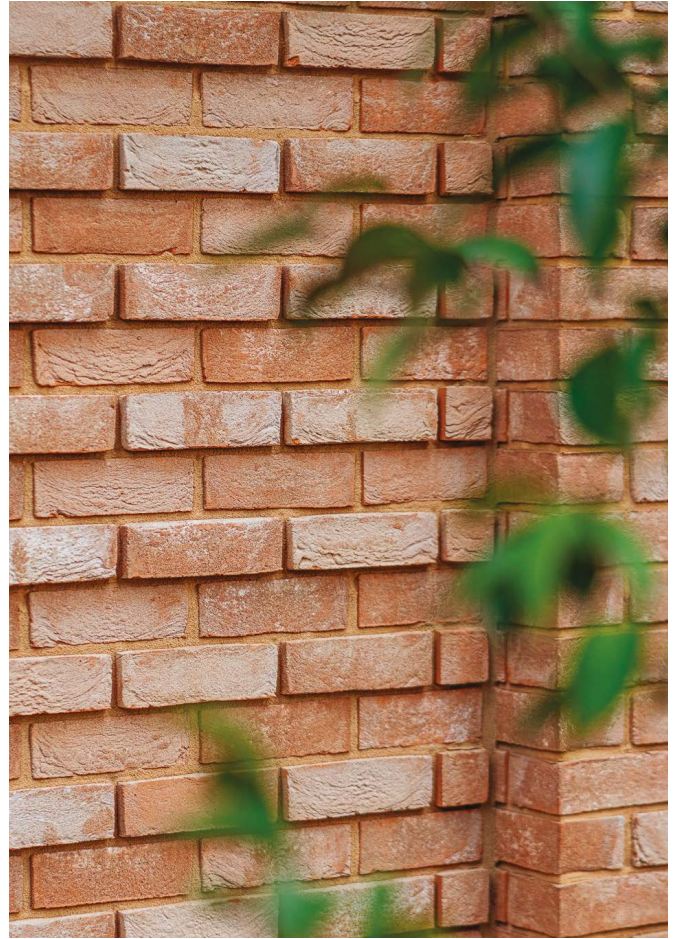
STOFIX façade elements can be fixed to any load-bearing structure capable of supporting approximately 38 kg/m<sup>2</sup> and the fixing system can be mounted on both insulated and non-insulated constructions.

STOFIX supplies a complete system consisting of pre-pointed façade panels and a steel mounting structure. The STOFIX substructure system offers maximum corrosion resistance due to the protective Magnelis coating.



## Custom design

For challenging building designs, STOFIX offers a wide range of solutions. The system can be developed to deliver bespoke features to capture the desired design intent for any facade. Columns, stepped surfaces and brick reveals can be achieved. Our experienced team provides early and ongoing design support to ensure highest quality meets architectural concept.



## Unitised construction

STOFIX is also suitable for unitised construction projects. Panels up to 600 × 1200 mm are installed onto story-height systems under controlled conditions. The result: shorter construction times, reduced material use and tangible cost savings for the overall project.





PROJECT: THE BATH HOUSE, BIRMINGHAM, UK

[READ MORE ON OUR WEBSITE](#)

# DESIGNED SUSTAINABLY. BUILT FOR THE FUTURE.



## Responsibility for the environment.

STOFIX combines energy efficiency with architectural aesthetics. Our conscious material selection and supplier partners align with our sustainable operations. STOFIX is a state-of-the-art façade system designed to perform as traditional brickwork construction with up to 80% less material. Standard brick slips are produced at 19mm thickness compared to 102mm full brick width.



## Reuse, restore. Preserve value.

STOFIX can be applied to existing superstructures to restore and rejuvenate buildings. Two thirds of the embodied carbon for any construction project is already built into the superstructure (Institute of Construction Engineers). Where an existing building frame can be preserved and repurposed, this will result in significant reduction of environmental impact. STOFIX is an ideal solution for refurbishing a deteriorated build, saving additional carbon emissions.



## Durable and safe.

STOFIX achieves a calculated service life of up to 60 years whilst satisfying Document B Fire Safety building regulations. Due to its fire resistance (Euroclass A2-s1,d0), this enables specifiers and designers to confidently create buildings over 18 meters without reservations or restrictions.



## Speed of install.

Installation is up to three times faster than traditional brickwork – straightforward, precise and cost-effective.



## Versatile and aesthetic.

Custom brick and mortar colours, formats and surface textures unlock extensive design freedom. For new construction or refurbishment projects, STOFIX integrates seamlessly into any architecture.



## Lightweight system.

In comparison to traditional brickwork construction, STOFIX achieves a surface weight reduction up to 70%. Significant structural savings can be realised in the foundations and the building frame. The level of prefabrication and step by step installation process also offsets the shortage of skilled labour on site, minimising delays and improving on site efficiency.

# END-TO-END DESIGN SERVICE.

STOFIX is a bespoke product, designed and developed for each unique façade. The panels and substructure will be designed to suit every project-specific requirement. The result is a seamless, end-to-end process with clear design and execution responsibilities finished with a smooth handover to the façade contractor.

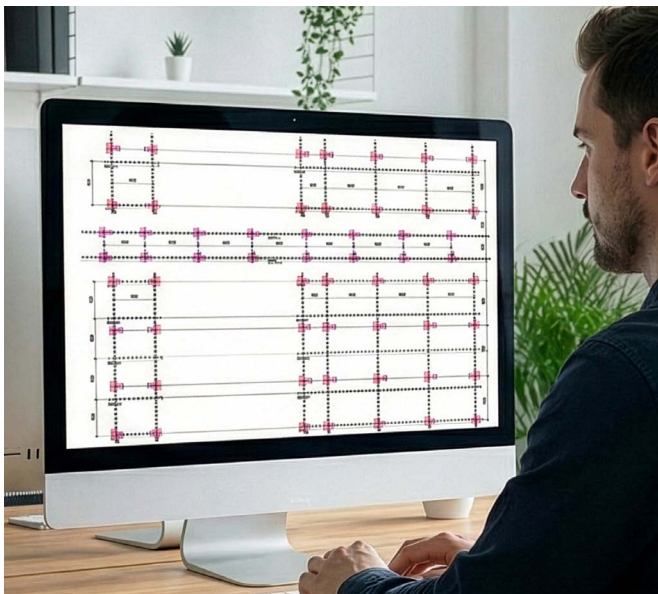
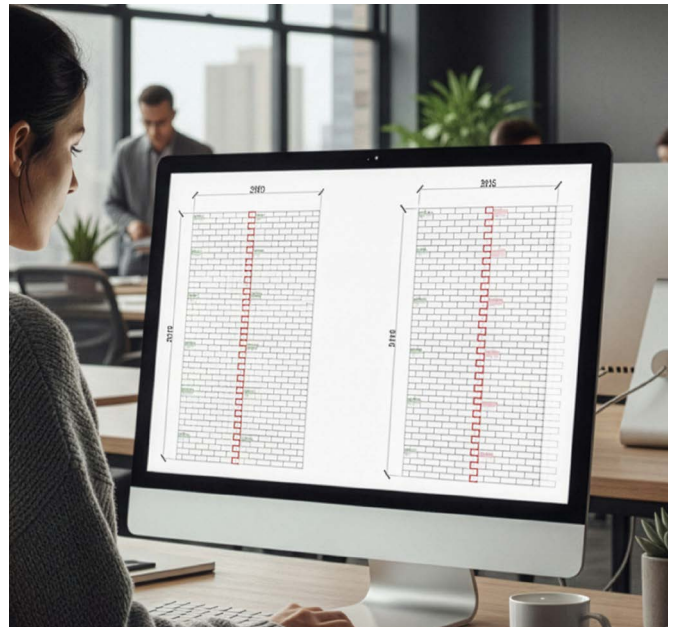


PROJECT: THE HOLLOWAY, BIRMINGHAM, UK

[READ MORE ON OUR WEBSITE](#)

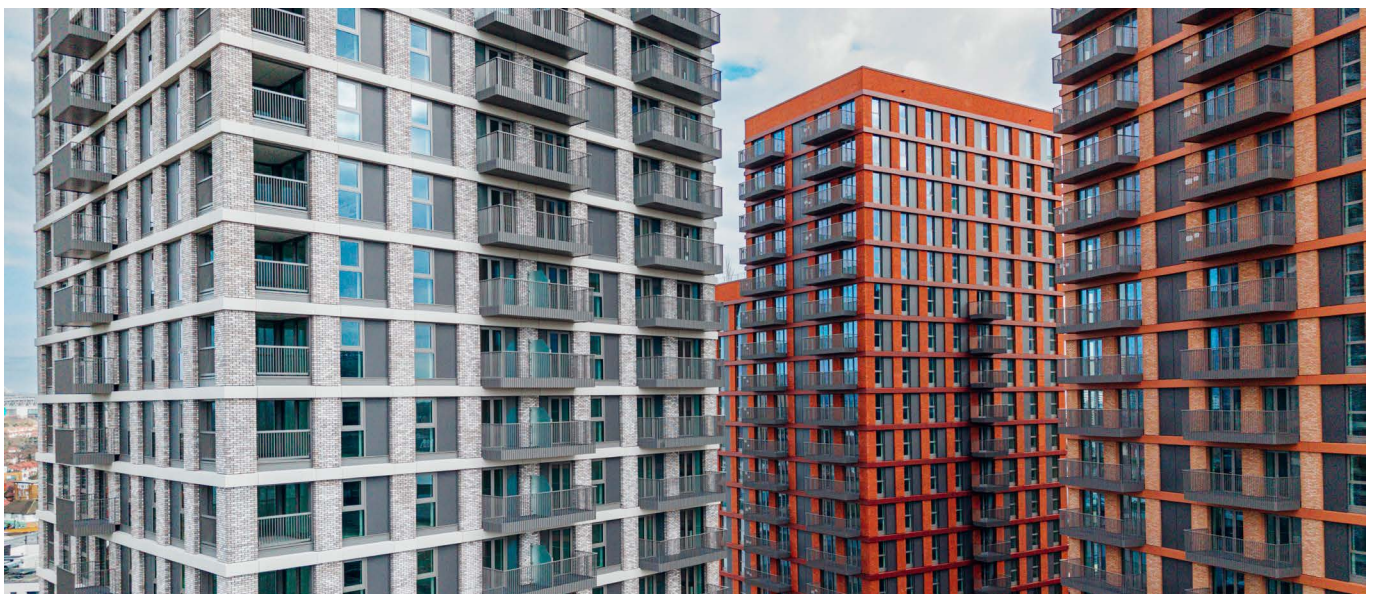
## Individually configured – panel by panel

Based on the project design, STOFIX prepare precise façade layouts with clear panel references. Format, bond pattern, joint layout, interfaces, and brick sizes are documented to ensure architectural design intent can be achieved. Each panel is precision-manufactured to the detailed dimensions, bond pattern, joint layout as specified. The outcome is a consistent, high quality result guaranteeing to deliver façade requirements and effortless installation on site.



## Perfectly aligned – ready for implementation

The alignment of substructure components is critical to ensure smooth installation on site. STOFIX takes responsibility for the designing and positioning of the mounting structure. It is structurally coordinated to provide the façade contractor with a clear, project- specific solution to remove complexity and accelerate workflows.



# EVERYTHING IN VIEW. ALWAYS.

## A game-changer in material logistics

STOFIX Track, our bespoke materials tracking software, has revolutionised STOFIX logistics. STOFIX Track offers real time material tracking, from production stages to packing, in transit and delivery to site. The system provides our clients with full transparency and traceability of each pre-pointed panel. Deliveries can be co ordinated to work with client's build programme ensuring materials to arrive to site as and when required.

# STOFIX TRACK



PROJECT: SOHO YARD/WEST BAR SQUARE, SHEFFIELD, UK

[READ MORE ON OUR WEBSITE](#)

## Client benefits at a glance

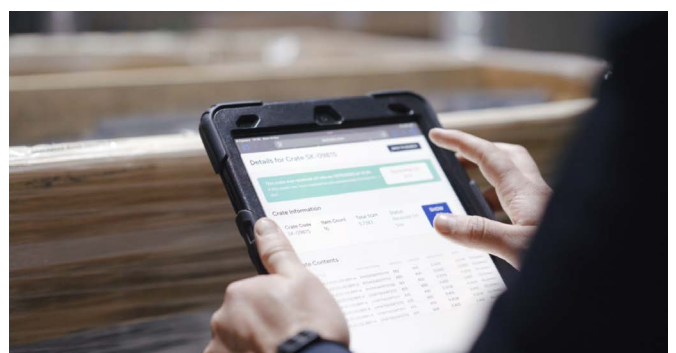
**Real-time tracking:** Clients receive a login to STOFIX Track to check the status of their materials at any time.

**Comprehensive visibility:** Each panel is scanned as it is packed. Clients can search by crate number, track the location of each panel, and view dispatch dates, reducing time spent on site locating specific panels.

**Time efficiency:** The system's filtering capability allows clients to locate specific crates quickly, such as those needed for a particular mast climber. This precision helps in reducing time on site, preventing delays.

**Damage reduction:** By minimising unnecessary handling and moving of crates, STOFIX Track reduces the potential for damage to panels.

**Automated notifications:** Production updates can be automated to alert clients of all manufacturing stages.





[www.stofix.co.uk](http://www.stofix.co.uk)

